

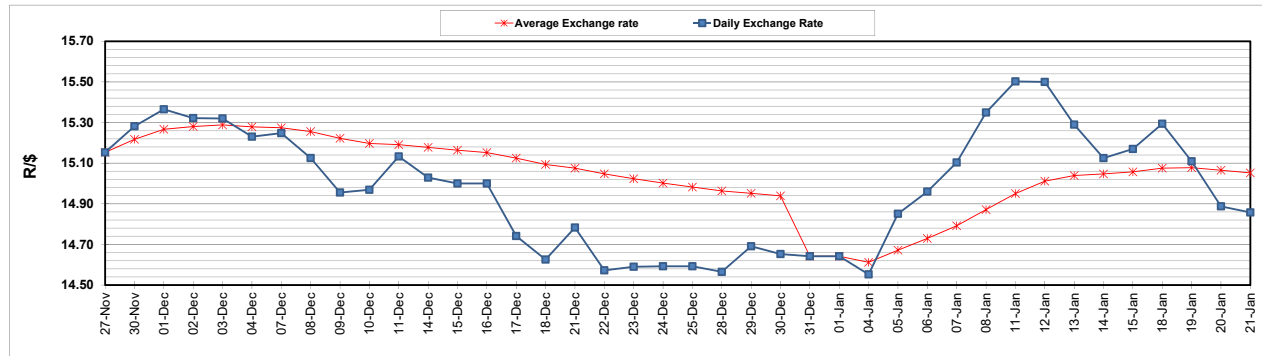
| | PETROL 95 ULP | PETROL 93 ULP & LRP | DIESEL 0.05% | DIESEL 0.005% | ILL. PAR. |
|--|---------------|---------------------|--------------|---------------|-----------|
| GAUTENG PUMP PRICE (SA c/l) AS FROM 06/01/2021 | 1,486.000 | 1,469.000 | - | - | - |
| WHOLESALE PRICE (SA c/l) AS FROM 06/01/2021 | - | - | 1,300.420 | 1,301.820 | 739.688 |
| SINGLE NATIONAL MAXIMUM RETAIL PRICE | - | - | - | - | 930.000 |
| BASIC FUEL PRICE - 21/01/2021 (SA c/l) | 595.945 | 588.891 | 587.937 | 589.389 | 575.707 |
| PRESS RELEASE CONTRIBUTION TO BFP 06/01/2021 - 21/01/2021 (SA c/l) | 519.170 | 512.170 | 541.630 | 543.030 | 527.128 |
| UNIT OVER/(UNDER) RECOVERY - 21/01/2021 (SA c/l) | (76.775) | (76.721) | (46.307) | (46.359) | (48.579) |
| AVERAGE BASIC FUEL PRICE 31/12/2020 - 21/01/2021 | 588.744 | 581.643 | 587.087 | 588.949 | 574.936 |
| AVERAGE UNIT OVER/(UNDER) RECOVERY 31/12/2020 - 21/01/2021 | (79.574) | (80.223) | (59.207) | (59.419) | (61.558) |

ANALYSIS MOVEMENT OF AVERAGE OVER/(UNDER) RECOVERY

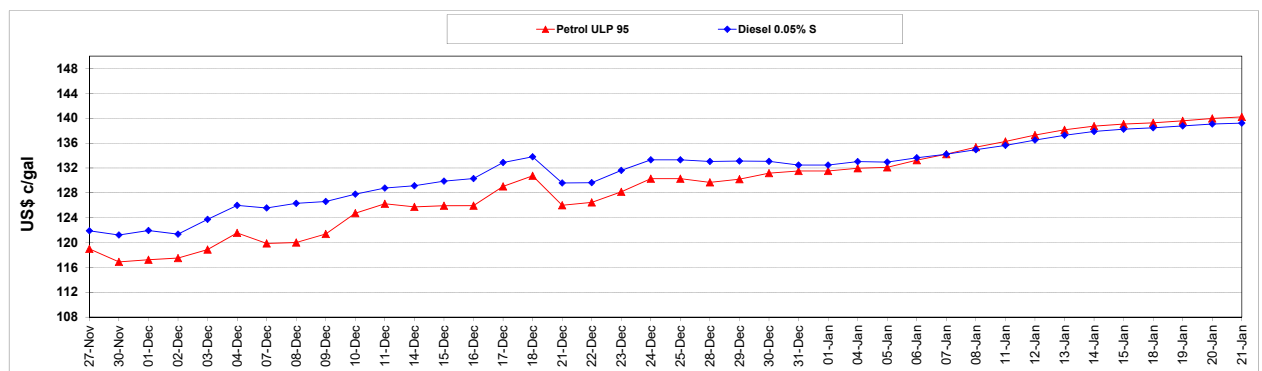
| | PETROL 95 | PETROL 93 | DIESEL 0.05% | DIESEL 0.005% | ILL. PAR. |
|--|-----------|-----------|--------------|---------------|-----------|
| - MOVEMENT IN INTERNATIONAL PRODUCT PRICES | (75.150) | (75.853) | (54.796) | (54.994) | (57.238) |
| - MOVEMENT IN EXCHANGE RATE | (4.424) | (4.370) | (4.411) | (4.425) | (4.320) |
| AVERAGE UNIT OVER/(UNDER) RECOVERY 31/12/2020 - 21/01/2021 | (79.574) | (80.223) | (59.207) | (59.419) | (61.558) |

R/\$ EXCHANGE RATE - (R/\$14.8575 - 21/01/2021)

EXCHANGE RATE USED IN BASIC FUEL PRICE



INTERNATIONAL PRODUCT PRICES OF BASKET USED IN BASIC FUEL PRICE



BASIC FUEL PRICE IN SA CENTS PER LITRE

